

Art Basel Miami Beach

Miami Beach Convention Center

December 1-3, 2022

Booth H01

For the 2022 edition of **Art Basel Miami Beach** we will present seminal works by **León Ferrari, Sarah Grilo, Rómulo Macció, Mario Pucciarelli, Ana Sacerdote** and **Kazuya Sakai**, a select group of forerunners of Lyrical Abstraction in Argentina during the 1960s and 1970s

KABINET 2022: Sarah Grilo . Works on paper

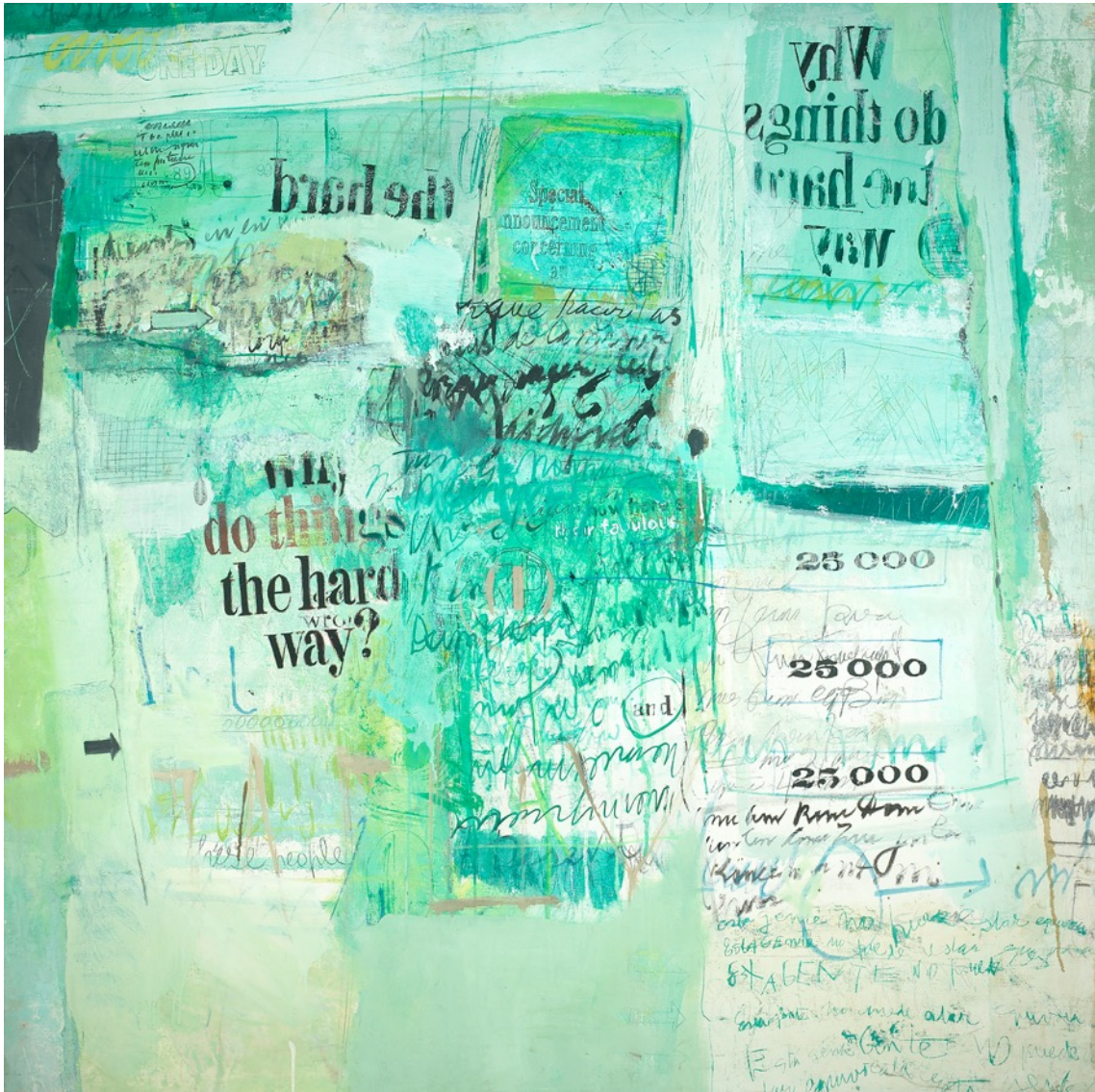
Our Kabinett sector at ABMB 2022 showcases selected works on paper by **Sarah Grilo** from different periods, focusing primarily on works ranging from the 1970s to the 1990s. Mostly made with oil, ink and graphite, all works on view possess the same energy, spontaneity and lyricism that distinguish her oeuvre. In these works, as in her works on canvas, Grilo incorporates words, graffiti - like inscriptions, stencils, arrows, symbols, signs and numbers. These are not mere graphic devices; they lie at the root of her personal esthetics.



Sarah Grilo, Untitled, c. 1970
Oil on canvas
72,5 x 59,5 cm



Sarah Grilo, *Mensaje De Interés*, 1981, Diptych
Oil on canvas
162,5 x 260 cm



Sarah Grilo, *The Hard Way*, 1968

Oil on Canvas

114 x 114 cm



Sarah Grilo, *Don't Go*, 1964
Oil on canvas
102 x 102 cm



Sarah Grilo, *Don't Look*, 1967

Oil on canvas

107 x 107 cm



Sarah Grilo, 5 Azul, 1973

Oil on canvas

73 x 73 cm



Sarah Grilo, *L'énigme*, 1983

Oil on Canvas

80 x 80 cm



Sarah Grilo, *Six Days of the Uncommon*, N.Y. 1964

Oil on canvas

63 x 53 cm



Sarah Grilo, Untitled c. 1980

Oil on canvas

54 x 68 cm



Sarah Grilo, *Dictionary Of Aphrodisiacs*, 1965

Oil on canvas

80 x 63 cm



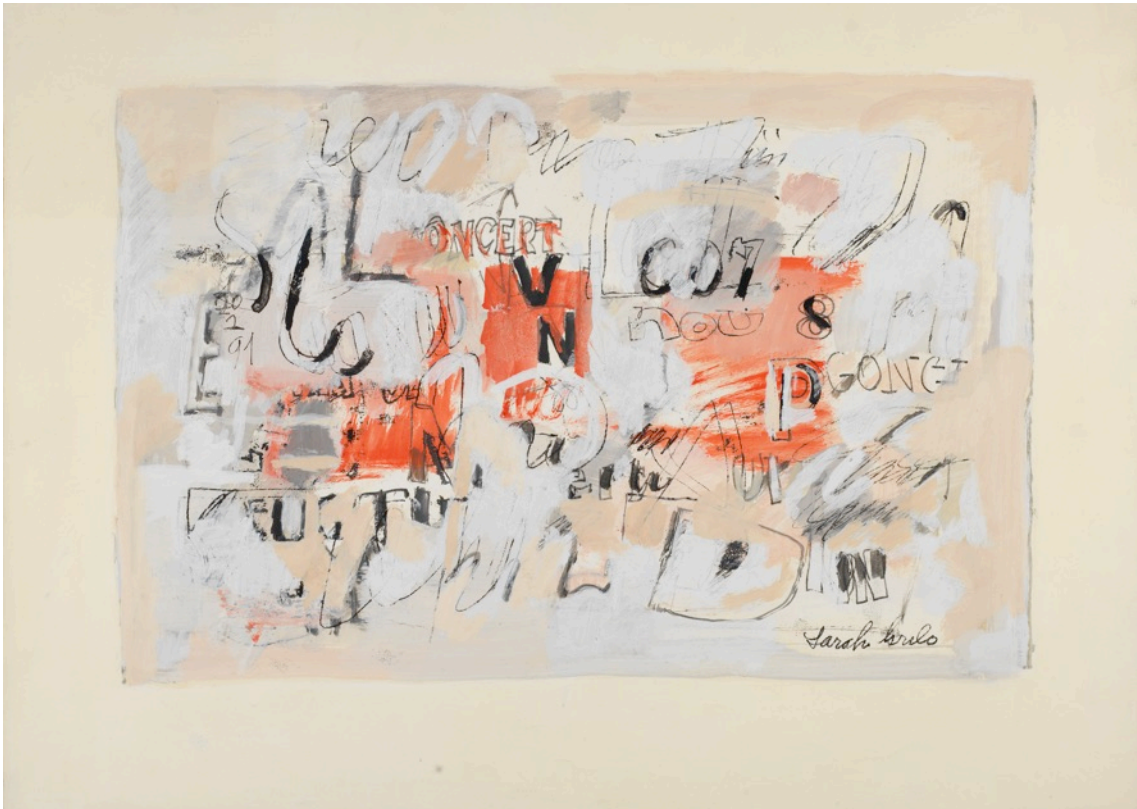
Sarah Grilo, Untitled, 1975

Oil on canvas

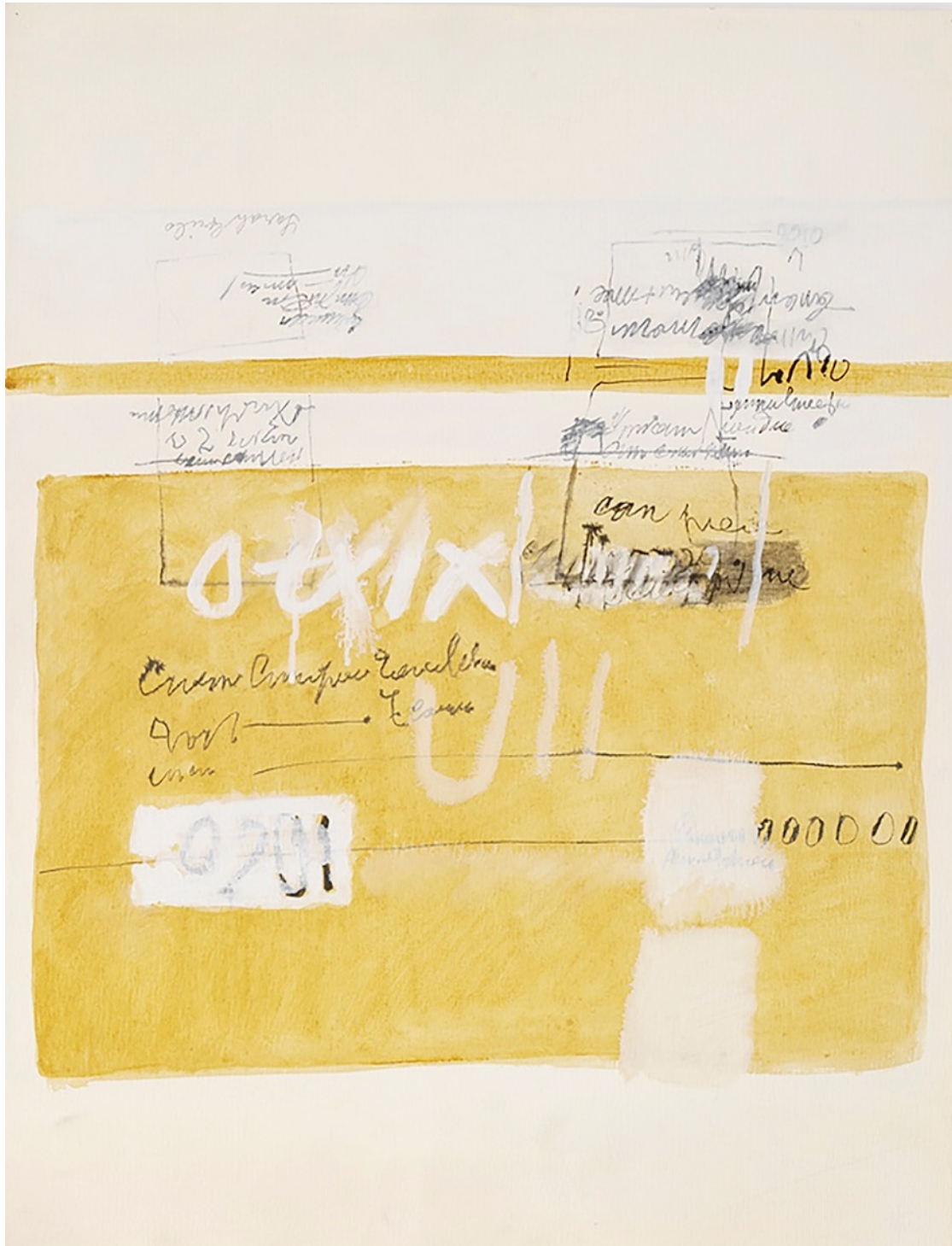
81 x 100 cm



Sarah Grilo, Untitled, 1990
Oil on paper,
70 x 100 cm



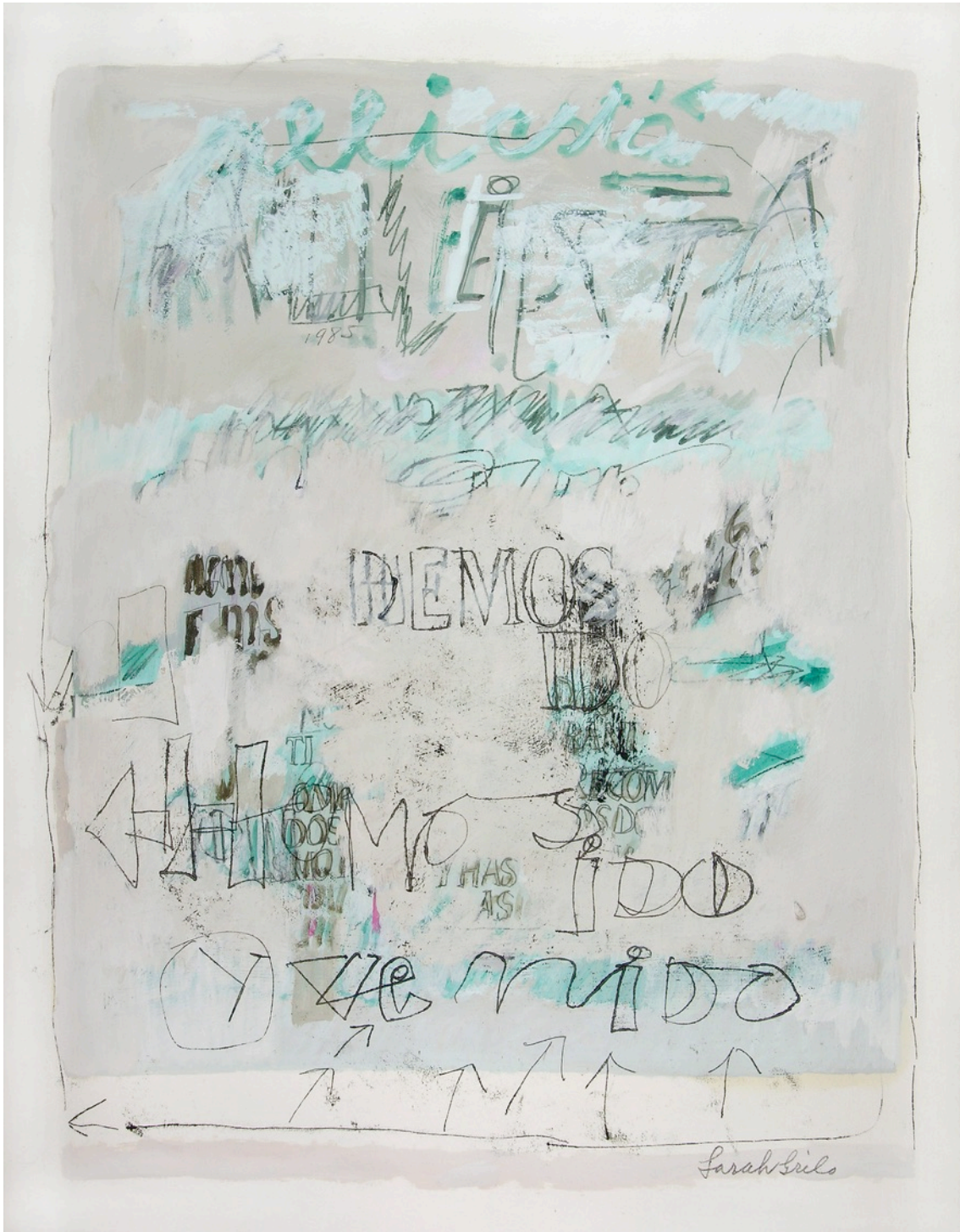
Sarah Grilo, Untitled, 1991
Oil on paper
36,5 x 56 cm



Sarah Grilo, Untitled, 1975
Oil on paper
65 x 50 cm



Sarah Grilo, *Peligro*, 1996
Oil on paper
51 x 46 cm



Sarah Grilo, Untitled, 1985
Oil on paper
56 x 46 cm



Sarah Grilo, Untitled, 1984

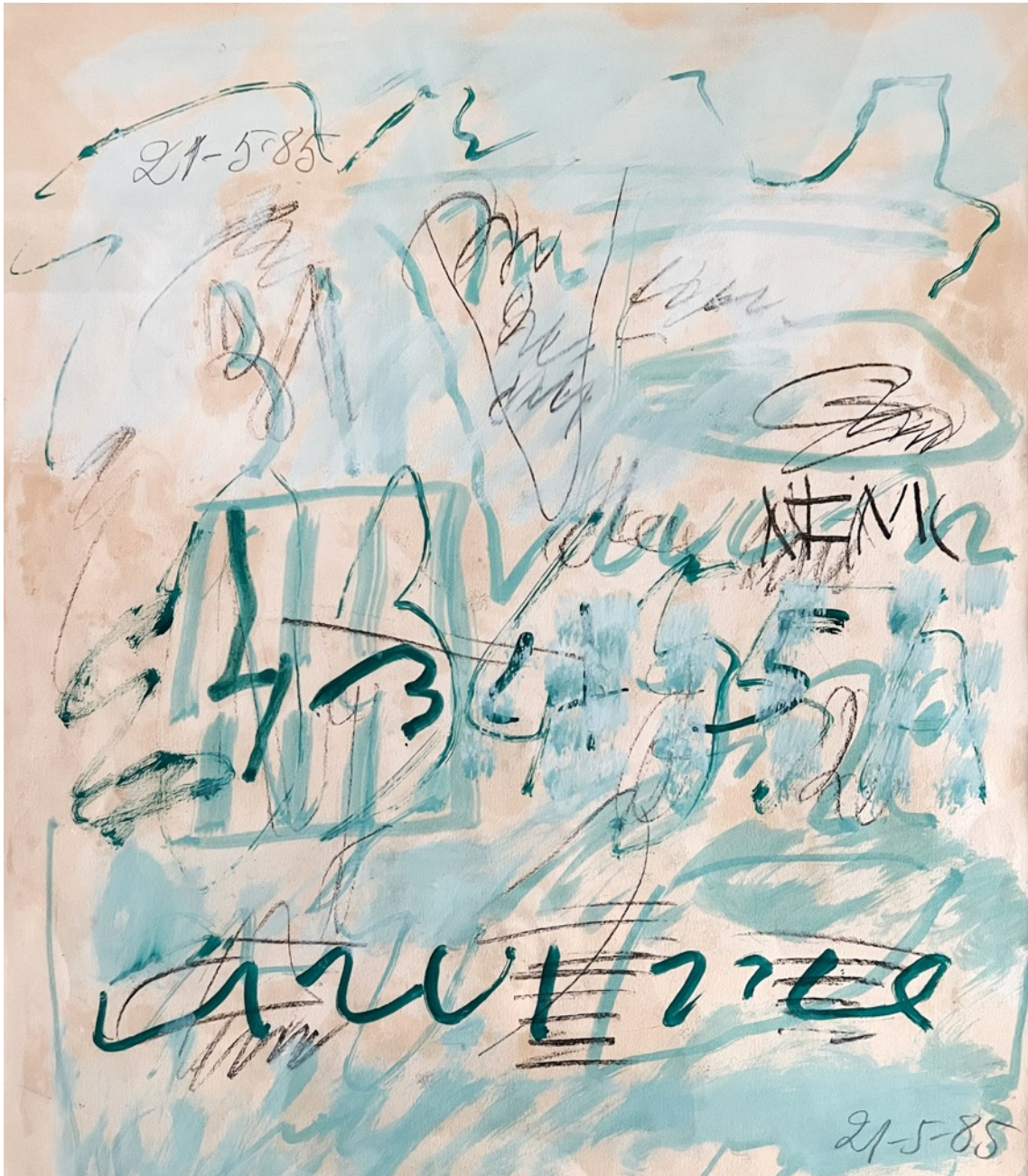
Oil on paper
52,5 x 50,5 cm



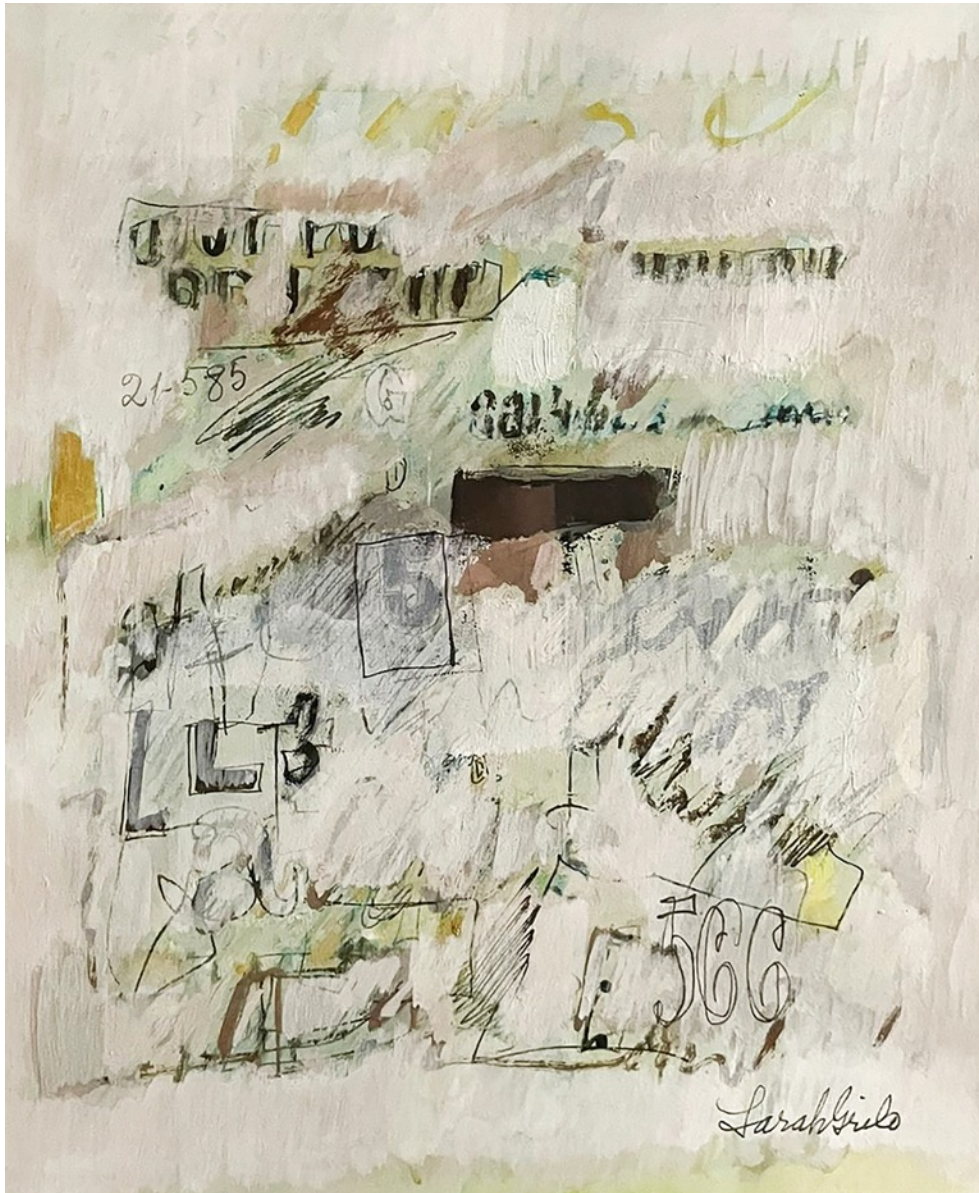
Sarah Grilo, Untitled, 1996
Oil on paper
53 x 54,5 cm



Sarah Grilo, Untitled, 1984
Oil on paper
50 x 77 cm



Sarah Grilo, Untitled 1985
Oil on paper
52 x 62 cm

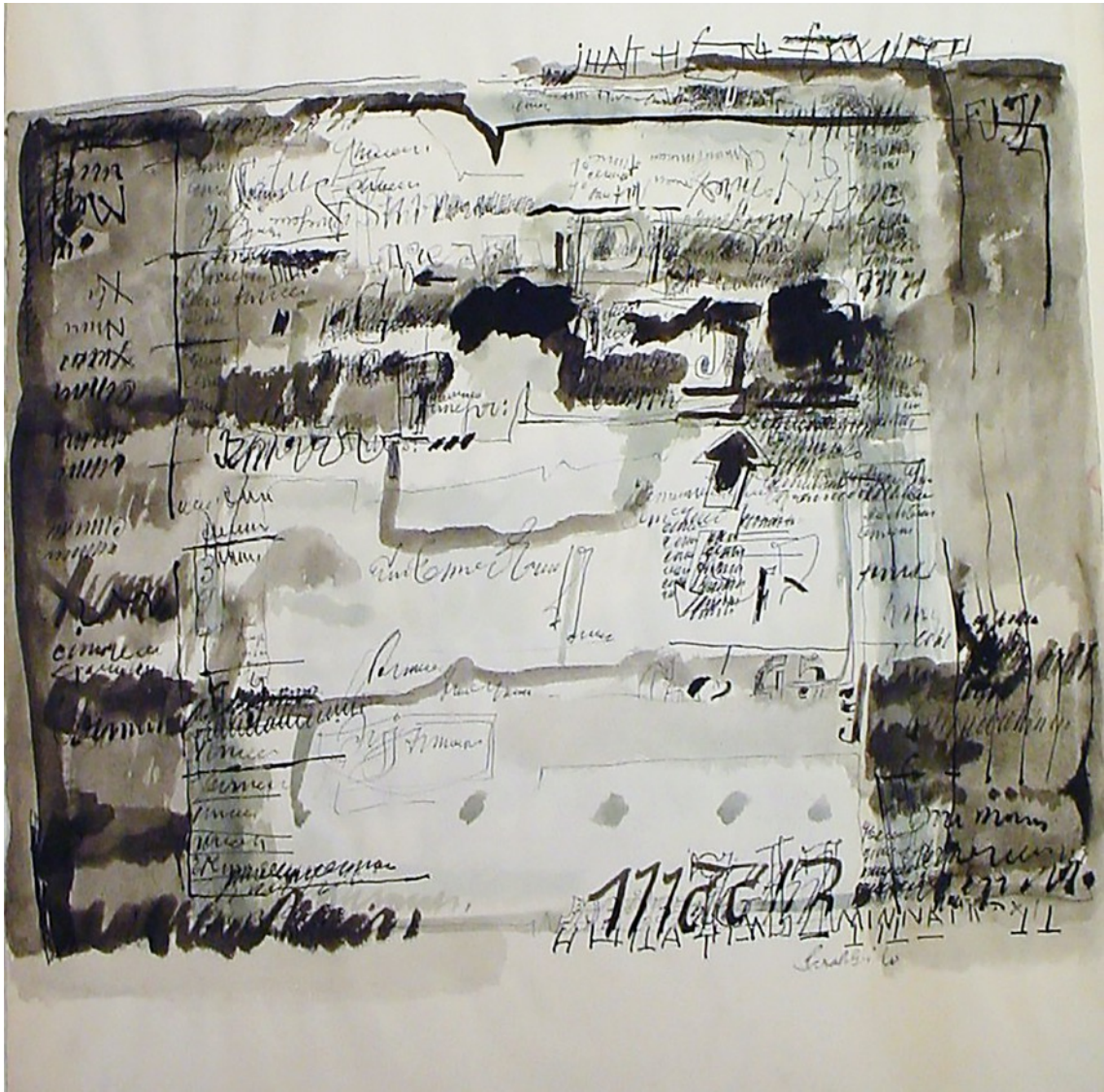


Sarah Grilo, Untitled, 1985
Oil on paper
51 x 44 cm



Sarah Grilo, Untitled, c.1980

Oil on paper
30,5 x 46,5 cm



Sarah Grilo, Untitled, c. 1970-1980

Ink on paper

65 x 50 cm

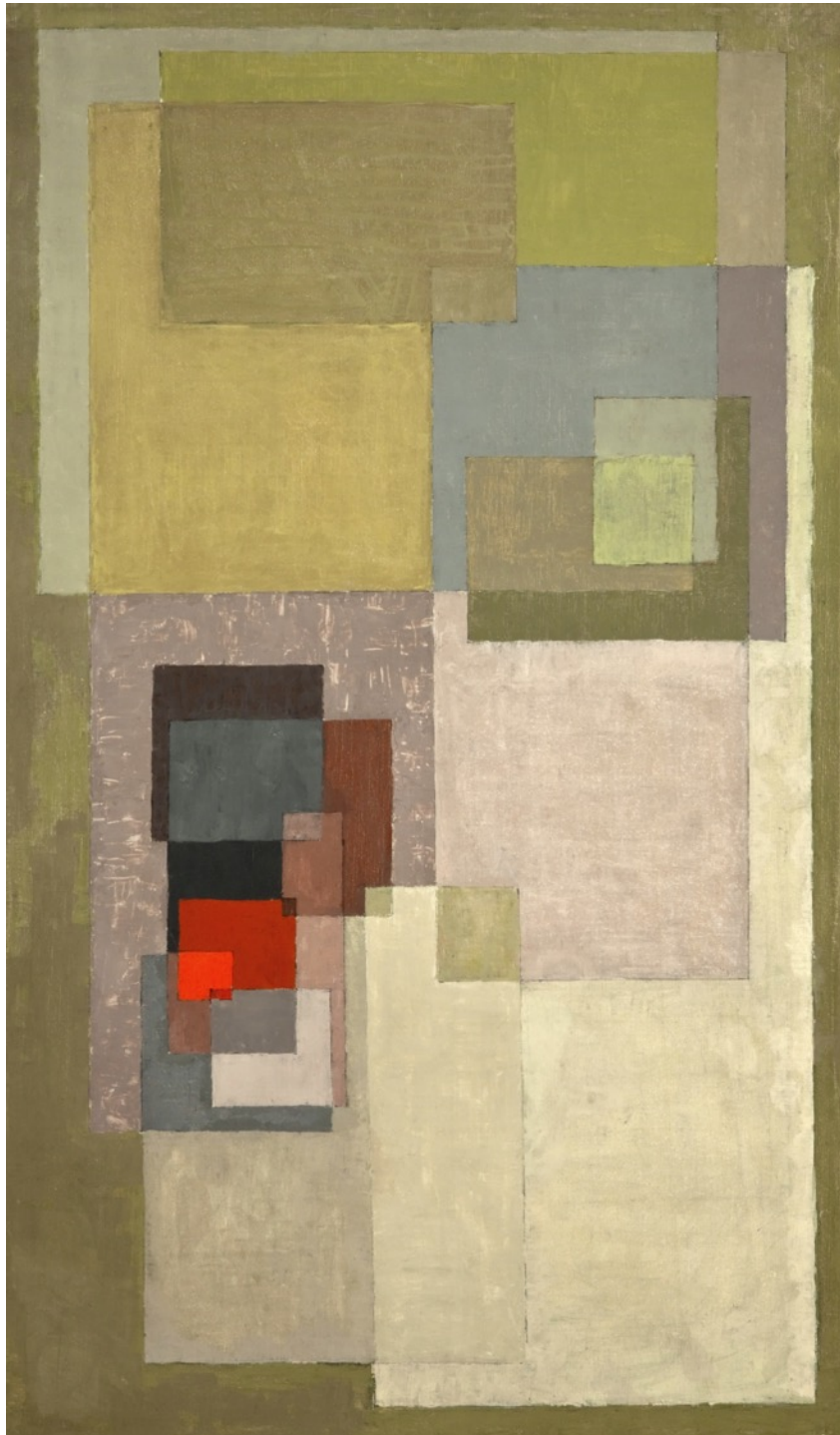


Sarah Grilo, Untitled, 1984

Oil on paper

50 x 55 cm

Jorge Mara | La Ruche



Ana Sacerdote, Untitled, 1967-68

Oil on canvas

104,5 x 61 cm

Jorge Mara | La Ruche



Ana Sacerdote, Untitled 1967

Oil on canvas

80 x 60 cm

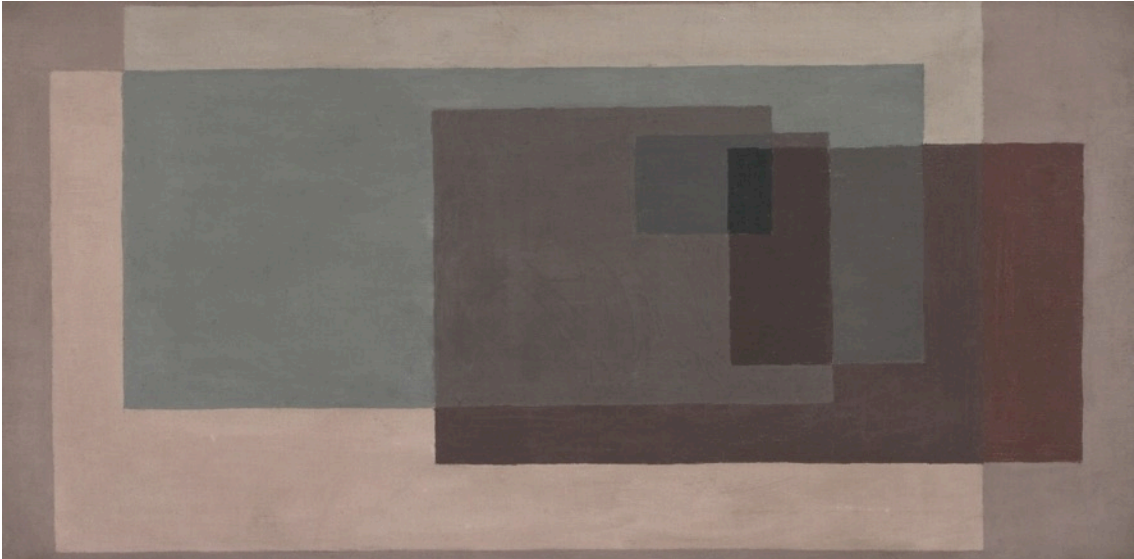
Paraná 1133, Buenos Aires, Argentina
+ (54) 11 4813-0552

www.jorgemalaruche.com.ar
info@jorgemalaruche.com.ar

Jorge Mara | La Ruche

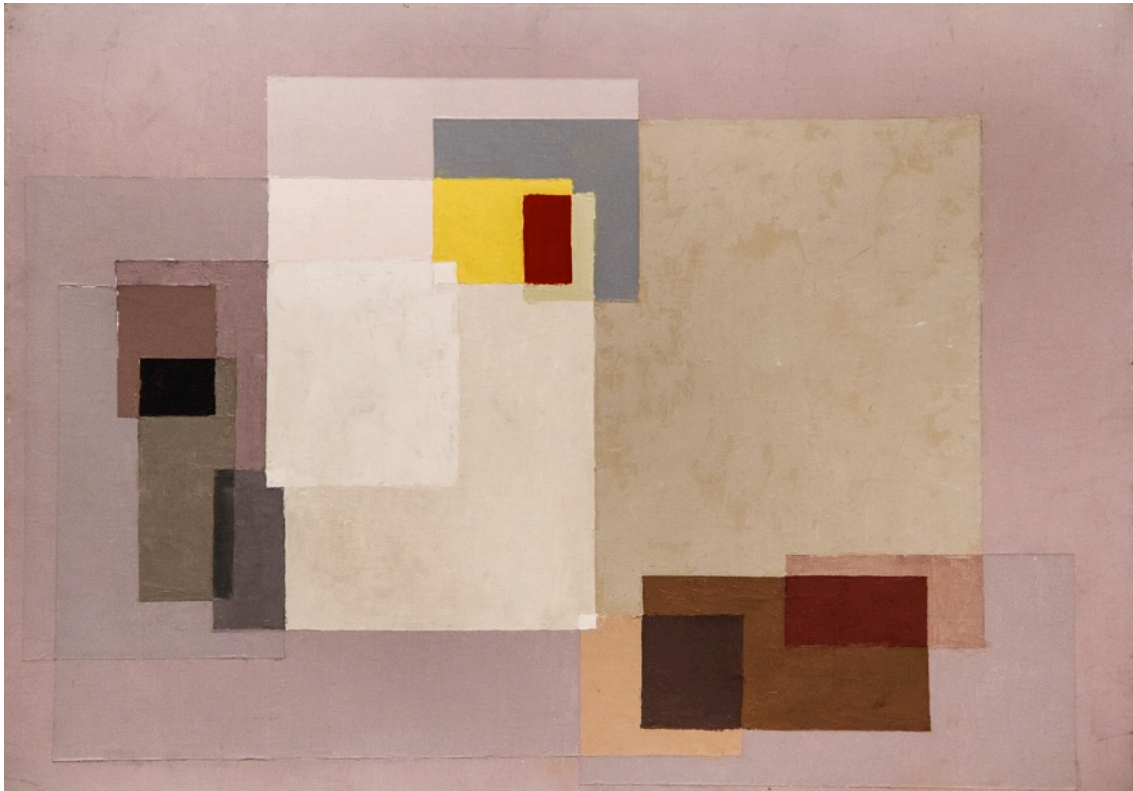


Ana Sacerdote, Untitled, 1967-68
Oil on canvas
100 x 73 cm



Ana Sacerdote, *Monocromático*, Buenos Aires 1967-68
Oil on canvas
39,4 x 79,8 cm

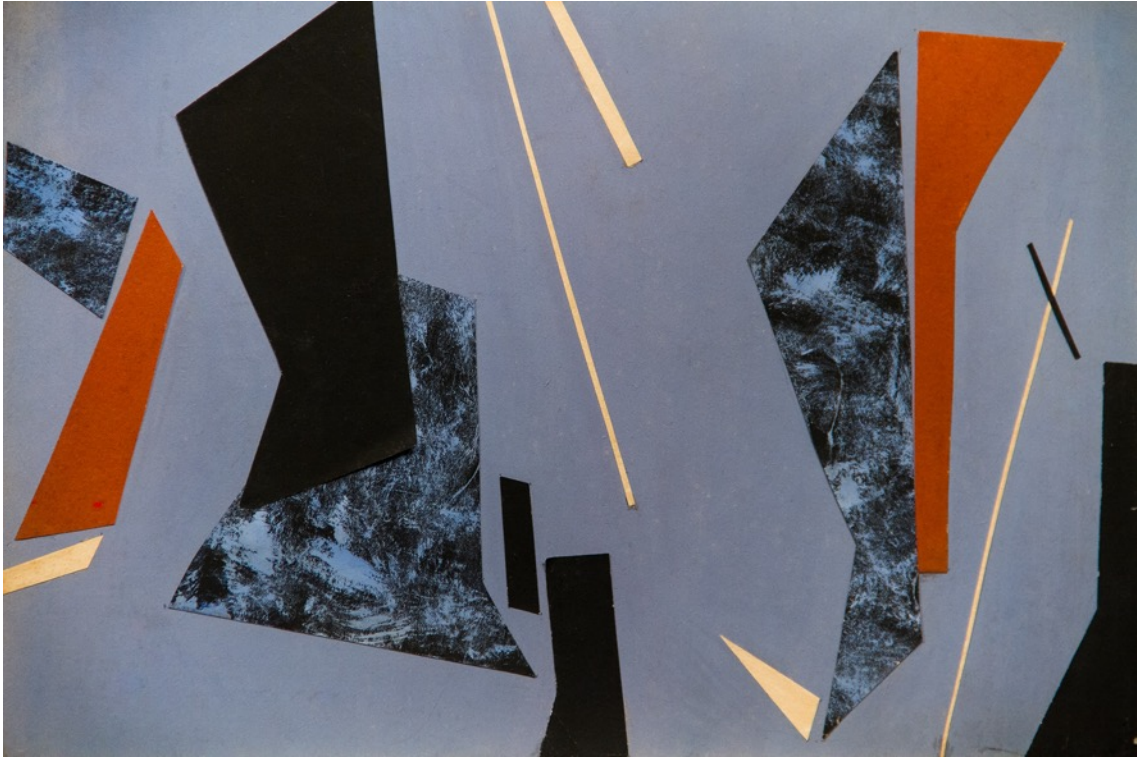
Jorge Mara | La Ruche



Ana sacerdote, Untilted, 1968

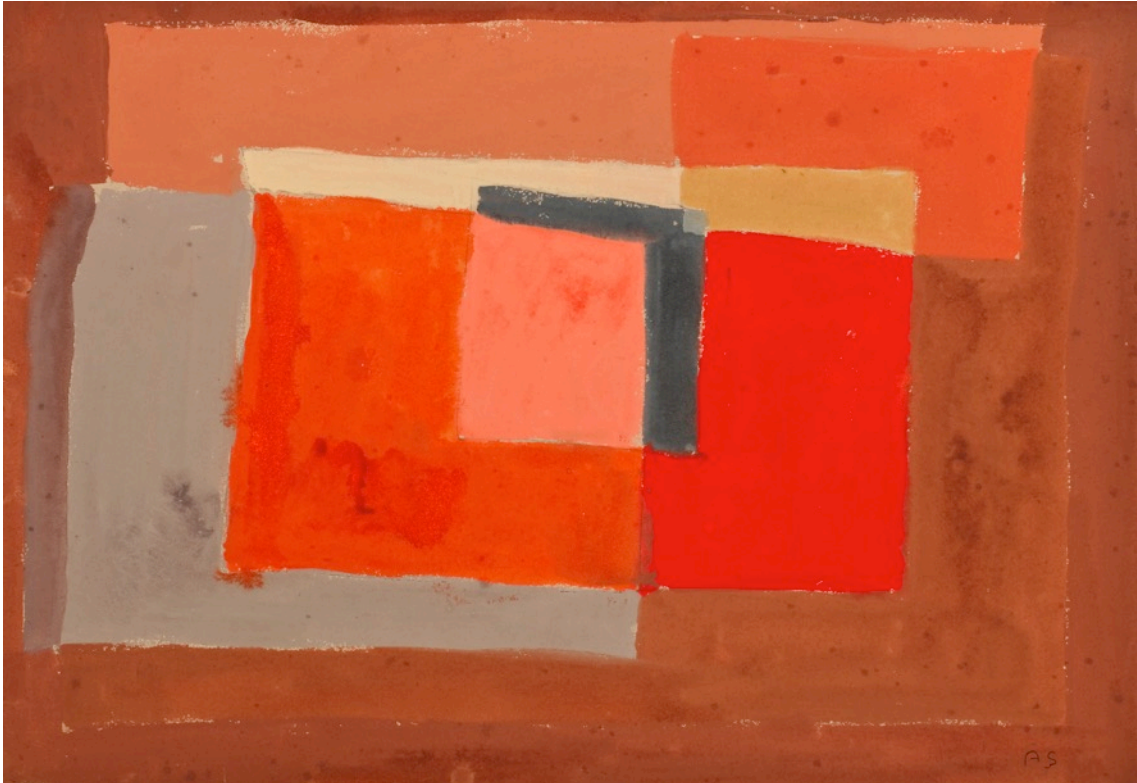
Oil on canvas

50 x 70 cm



Ana Sacerdote, *Estudio de Equilibrio*, 1955,
Collage on paper
25 x 35 cm

Jorge Mara | La Ruche



Ana Sacerdote, Untitled, 1960
Gouache on paper
31,5 x 45,5 cm



León Ferrari, Untitled, 1977

Ink on paper

48 x 33 cm



León Ferrari, Untitled, 1976

Colored pencil on paper

49 x 34 cm



León Ferrari, Untitled, 1979

Ink on paper

50 x 37 cm



León Ferrari, Untitled, 1976

Pencil on paper

49 x 35 cm



León Ferrari, Untitled, 1979

Ink on paper

50 x 35 cm



León Ferrari, Untitled, 1979

Ink on paper

53 x 38 cm

Jorge Mara | La Ruche



Kazuya. Sakai, *Pintura N° 39*, 1960

Oil on canvas

146 x 114 cm

Paraná 1133, Buenos Aires, Argentina
+ (54) 11 4813-0552

www.jorgemalaruche.com.ar
info@jorgemalaruche.com.ar

Jorge Mara | La Ruche



Kazuya Sakai, Untitled, 1960

Oil on canvas

45,5 x 55 cm

Jorge Mara | La Ruche



Kazuya Sakai, Untitled, 1960
Oil on canvas
130 x 97 cm

Paraná 1133, Buenos Aires, Argentina
+ (54) 11 4813-0552

www.jorgemalaruche.com.ar
info@jorgemalaruche.com.ar



Kazuya Sakai, Untitled, 1960

Oil on canvas

114 x 146 cm



Kazuya Sakai, *Pintura n° 64*, 1960

Oil on canvas

146 x 114 cm



Kazuya Sakai, *Pintura N° 73*, 1960

Oil on canvas

80 x 100 cm



Mario Pucciarelli, *Sensación de Extrema Pictoricidad*, 1960

Oil on canvas
146 x 113,5 cm



Romulo Macció, Untitled, 1963

Oil on canvas

37 x 42 cm



Romulo Macció, Untitled 1963

Oil on canvas

37 x 42 cm

The **Jorge Mara • La Ruche** Gallery, inaugurated in late 2001, is a new space continuing the tradition of the existing *Galería Jorge Mara* established in Buenos Aires, Argentina, in the 1980s and exhibiting in Madrid, Spain, from 1990-98.

Following the program of the previous galleries, the new space focuses on Mid-Twentieth Century Argentinean and Latin American art and photography, while spotlighting the work of contemporary Latin American artists.

Contact:

info@jorgemalaruche.com.ar

Paraná 1133, Buenos Aires, Argentina

+ (54) 11 4813-0552

www.jorgemalaruche.com.ar